

# Sidewalk Condition Guide

## What did we measure?

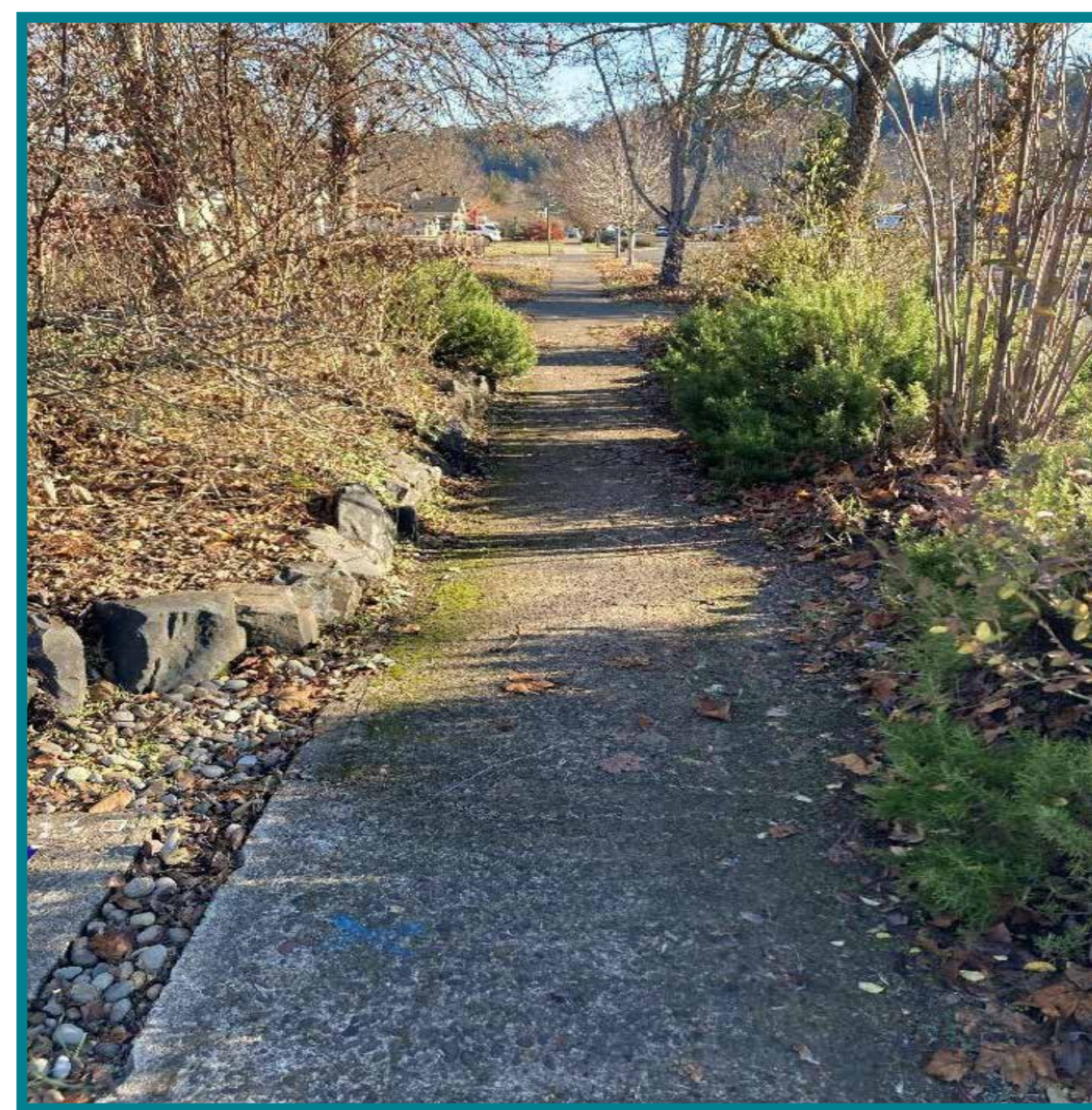
We measured different sidewalk conditions, focusing on...



### Height Differences

Height Differences occur when two or more sidewalk slabs meet at different heights. We categorized sidewalks as:

- $\leq 1/4$  inch
- $1/4$  inch -  $1/2$  inch
- $\geq 1/2$  inch



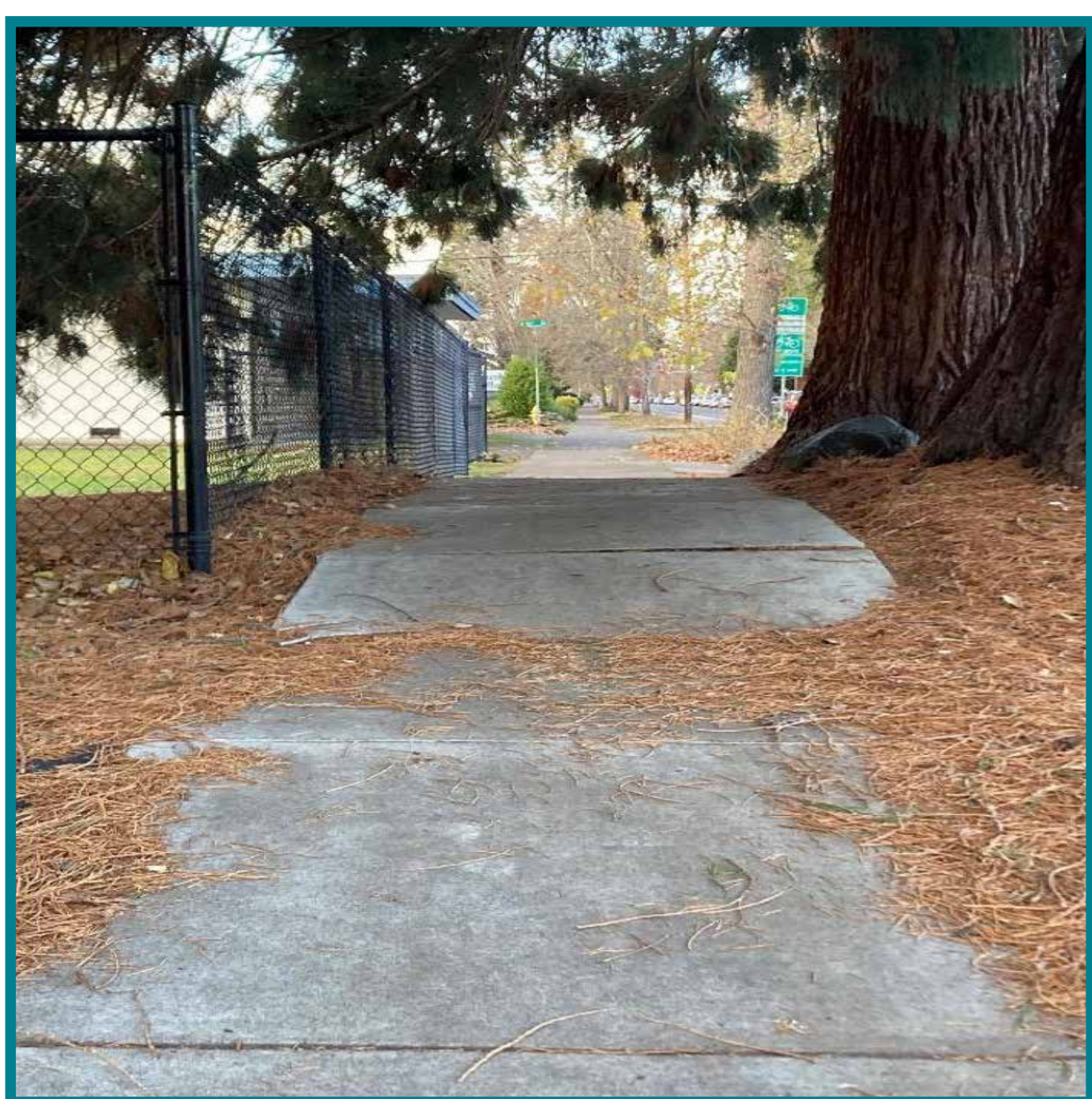
### Passage

Passage refers to the passable width of the sidewalk at a given point. We categorized sidewalks as:

- "Less than 48 inches"
- "48 inches or wider"

### Obstructions

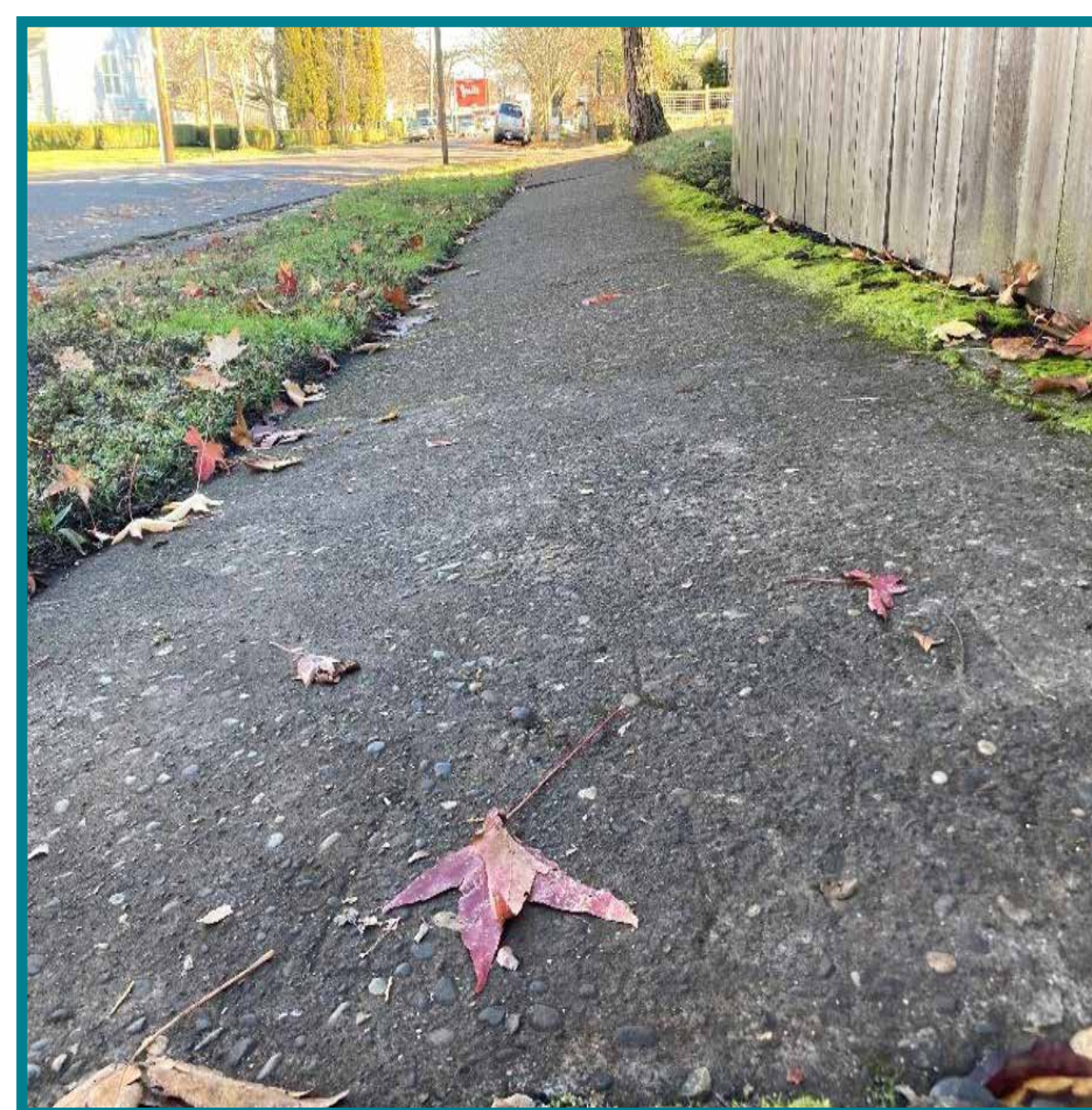
Obstructions are physical objects that prevent a sidewalk from meeting ADA requirements.



### Running slope

The running slope is the slope or grade in the direction of travel. We categorized sidewalks as:

- $< 5\%$
- $5\% - 8\%$
- $> 8\%$

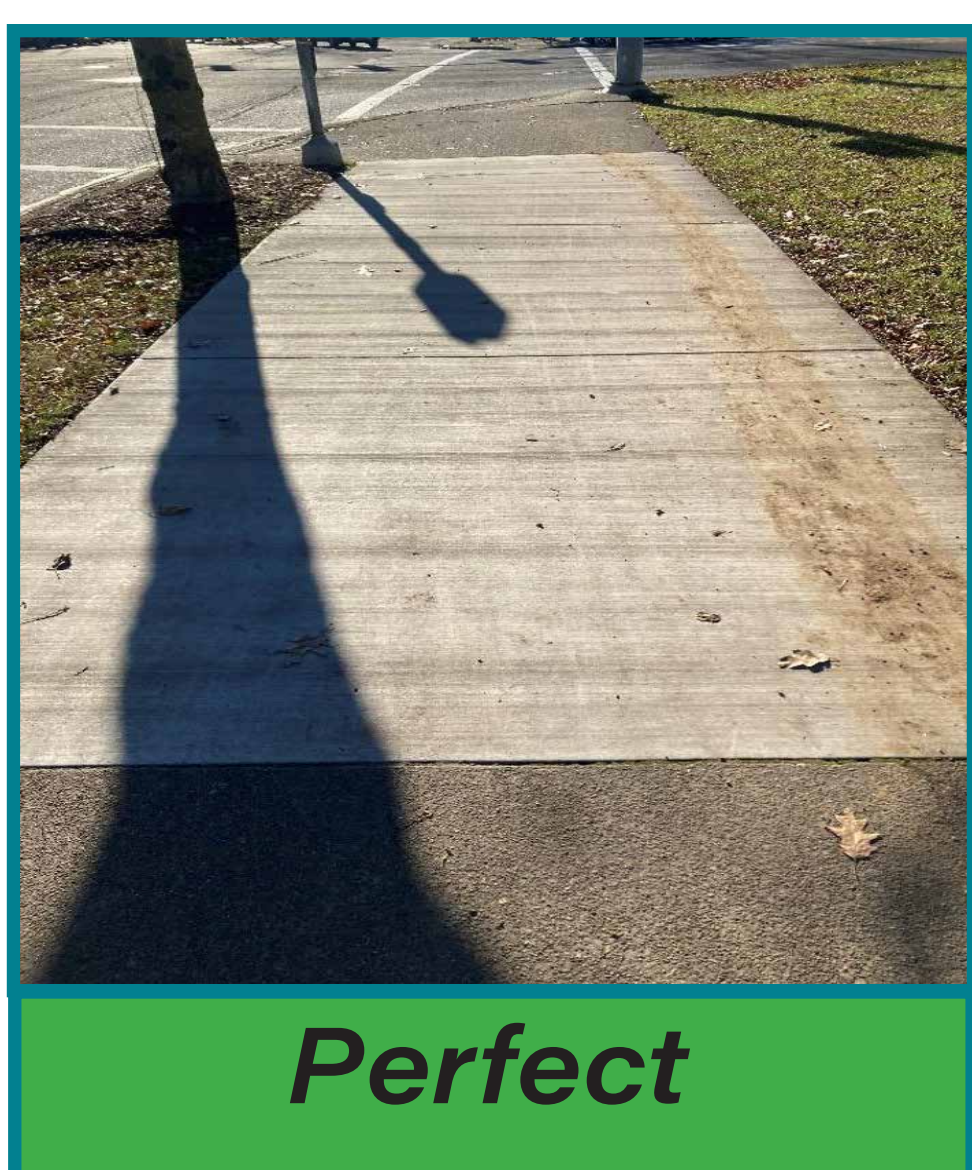


### Cross slope

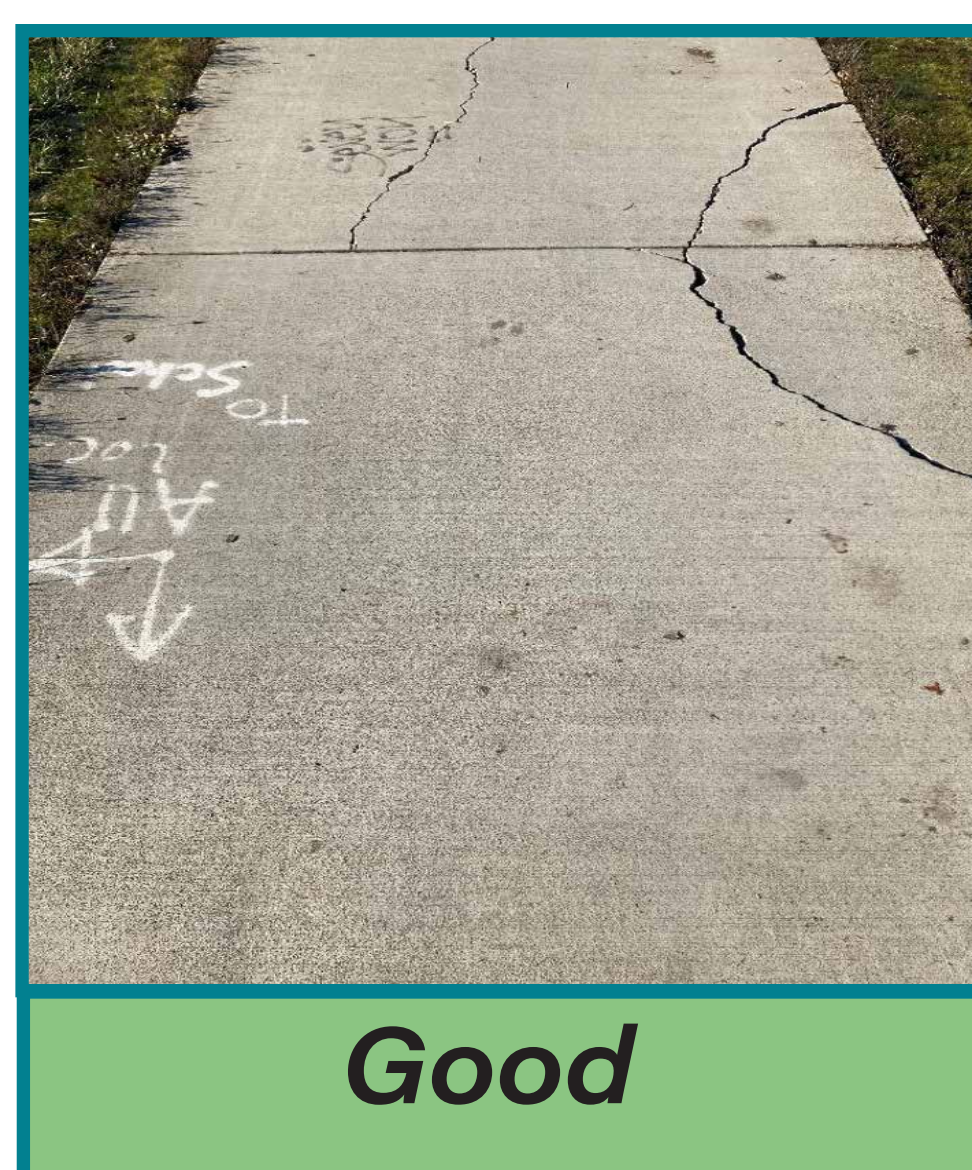
Cross slope indicates the grade of the sidewalk perpendicular to the direction of travel. We categorized sidewalks as:

- $\leq 2\%$
- $> 2\%$

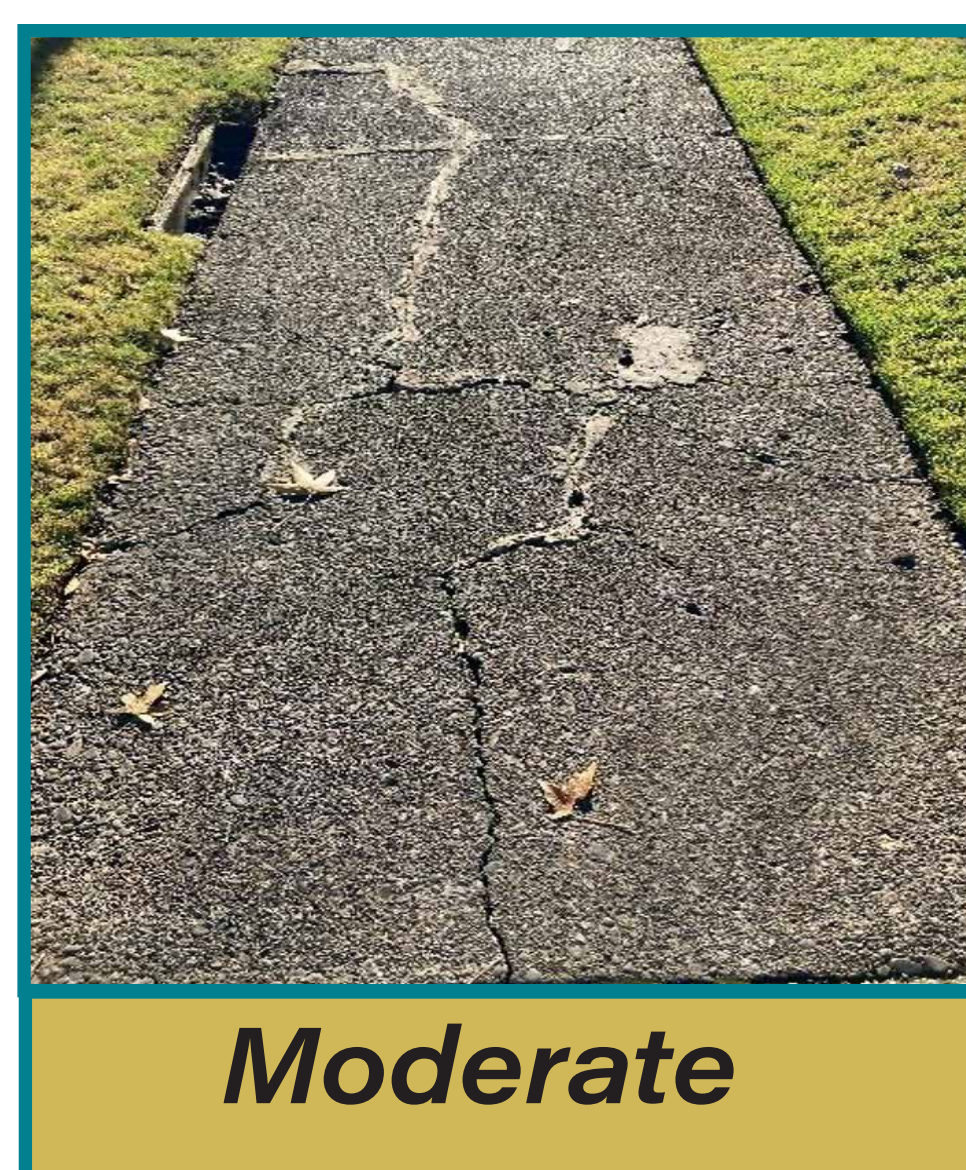
## Surface Conditions



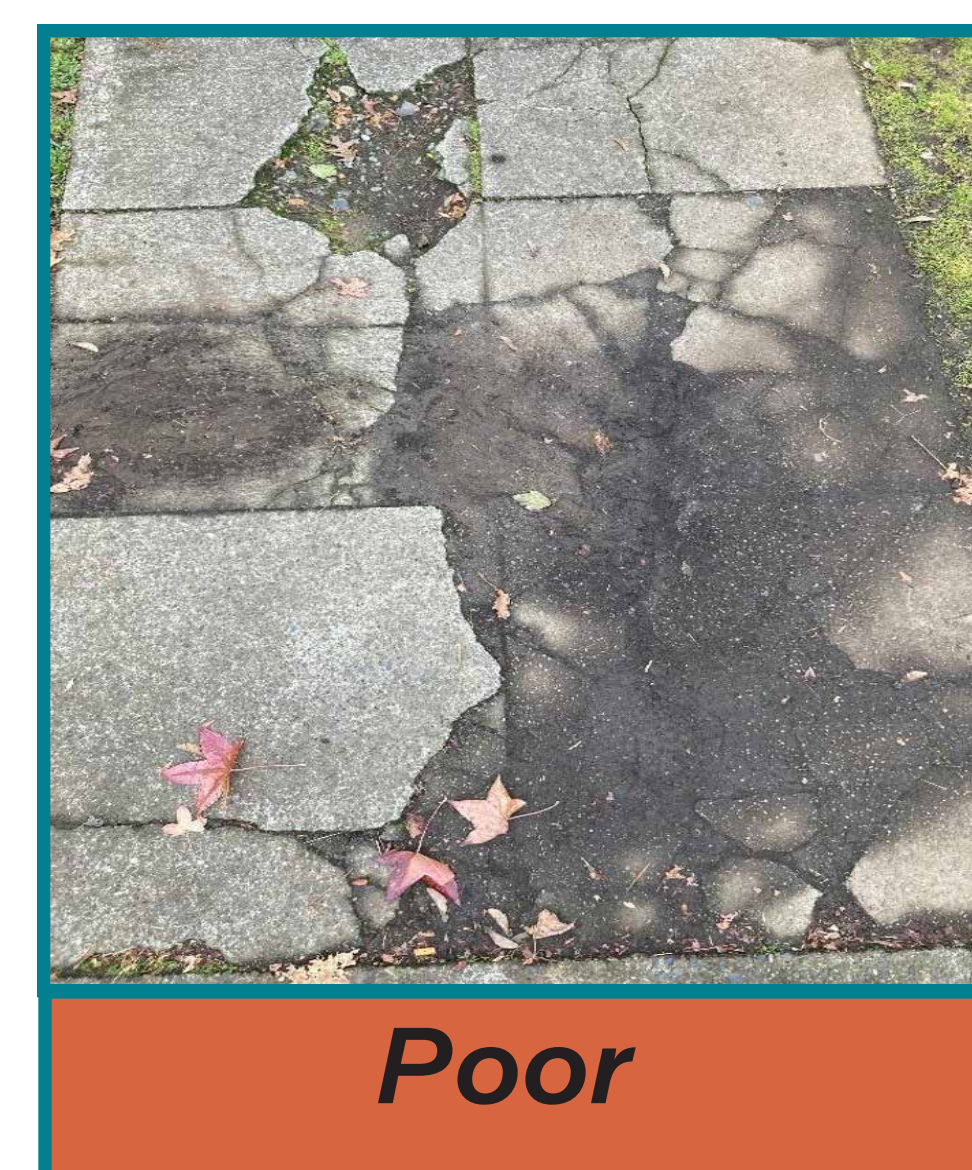
Perfect



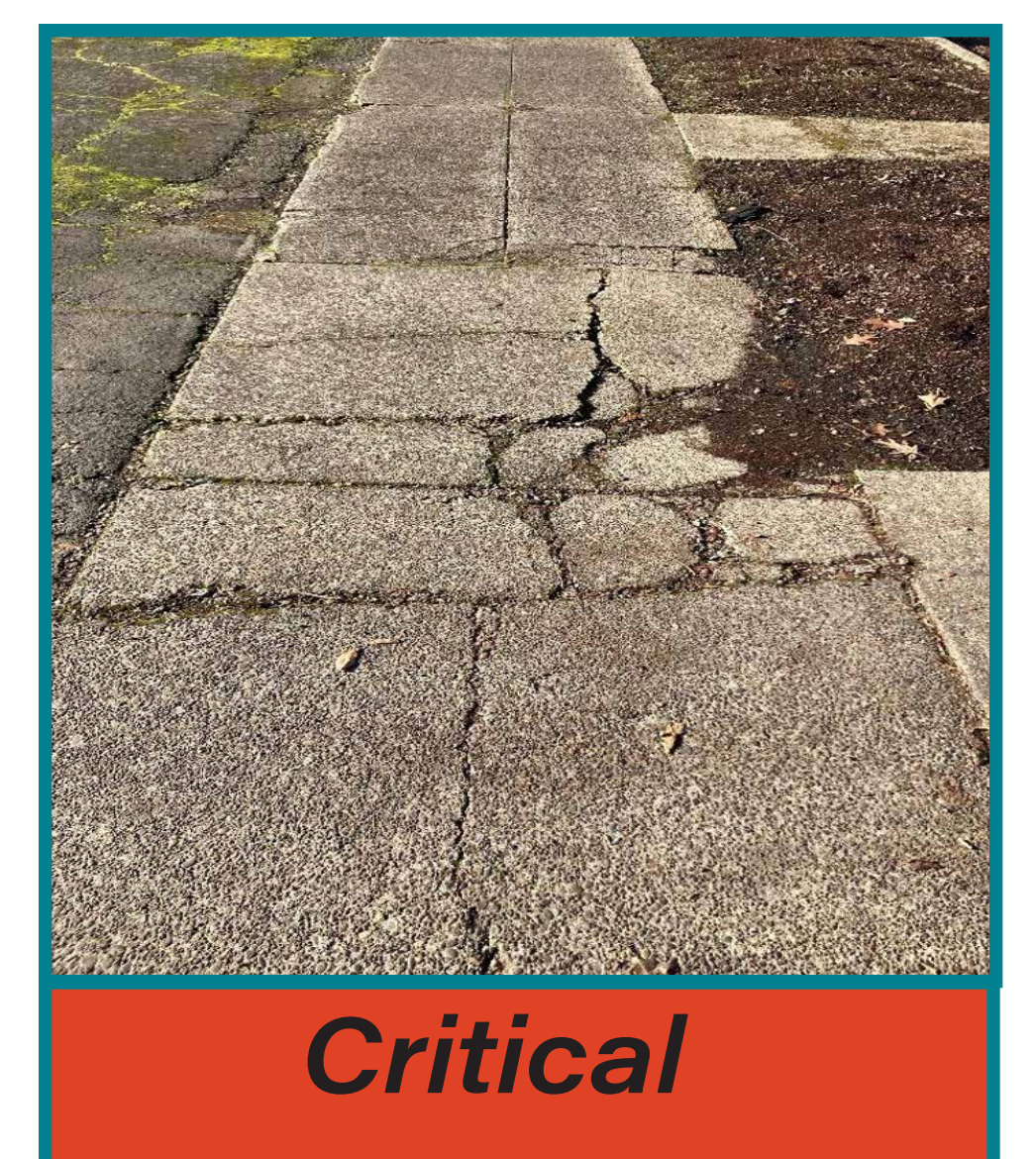
Good



Moderate



Poor



Critical