

Connecting The Bike Network

Intersection at Royal Ave.
and Highway 99

Before



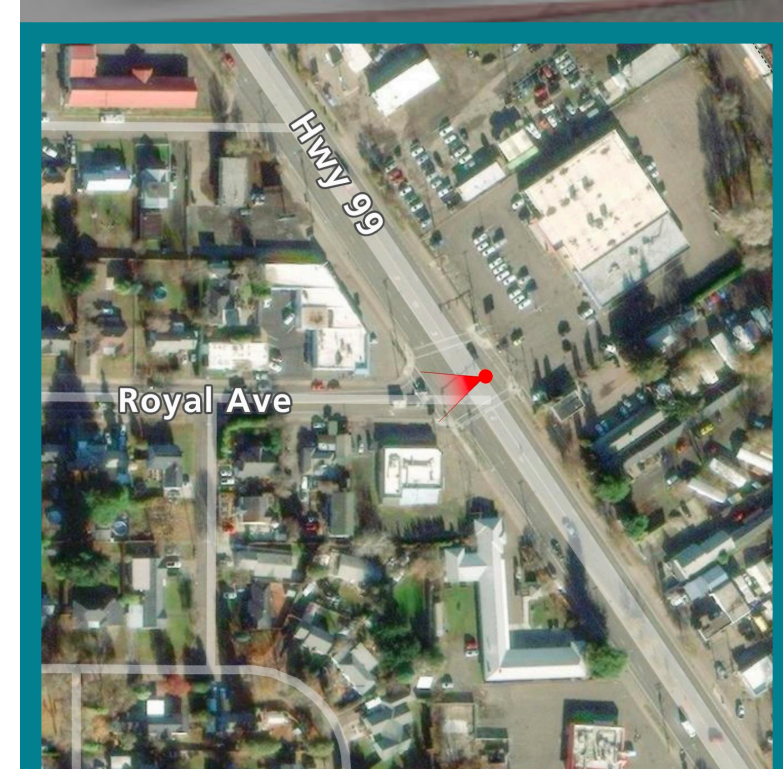
Safety

- No indications of bicycle traffic
- Cars and trucks are parked in the narrow bike lane
- Wide street encourages high speeds among cars
- Wide turn lane makes cars unlikely to yield to bicyclists

Mobility

- Not clearly marked for bicycle or pedestrian traffic
- Signage fails to communicate to cyclists who are unfamiliar with the route
- Wide turn lane limits bicycle mobility

After



Safety

- Crosswalk is more clearly marked
- Curbouts and planters slow down traffic entering the intersection
- Road color and sharrows inform drivers of bicycle route so they can adjust speeds

Mobility

- Road color indicates to cyclist this route is a part of the street network
- Narrow road and filling in of left turn lane forces cars to yield to cyclists
- Curbouts and planters encourage pedestrian use



Eugene Neighborhood Greenways 2.0
Redesigning Streets for Bike & Pedestrian Mobility